

# HOB682D2

Product Family	Hob
Built-in type	Ultra-low profile or Fully Flushed
Dimensions	83 cm
Power supply	Electric
Type	Induction with integrated rangehood
Extraction	Extraction
Electronic control	Yes
EAN code	8017709341893
Energy efficiency class ( EEC)	A+



## Aesthetics



Aesthetic	Universale
Colour	Black
Finishing	Glass
Material	Glass
Glass type	Ceramic
Glass edge	Straight edge
Pan stands	Stainless steel
Type of control setting	Multi Slider
Slider	Yes
Slider	White
Control knob position	Front
Serigraphy colour	Grey

## Program / Functions



No. of induction cook zones	4
Time-setting options	Automatic Shutdown
No. of cooking zones with booster	4
No. of Flexible zones	2
Main on/off switch	Yes
Power levels	9
Total no. of cook zones	4

## Options



<b>Multizone Option</b>	Yes	<b>Pause option</b>	Yes
<b>Flexible Zone Type</b>	MultiZone	<b>Minute minder</b>	1
<b>Standard cut out</b>	490x750 mm	<b>End of cooking alarm</b>	Yes
<b>Simmering Function</b>	Yes	<b>Residual time indicator</b>	Yes
<b>Keep warm automatic function</b>	Yes	<b>Control Lock / Child Safety</b>	Yes
<b>Melting/Low temperature cooking function</b>	Yes	<b>Quick start</b>	Yes
<b>End cooking timer</b>	4	<b>Rapid level selection</b>	Yes

## Technical Features



Front-left - Induction - Multizone - 2.10 kW - Booster 3.00 kW - 21.0x19.0 cm  
 Rear-left - Induction - Multizone - 2.10 kW - Booster 3.00 kW - 21.0x19.0 cm  
 Rear-right - Induction - Multizone - 2.10 kW - Booster 3.00 kW - 21.0x19.0 cm  
 Front-right - Induction - Multizone - 2.10 kW - Booster 3.00 kW - 21.0x19.0 cm  
 Multizone left - Booster 3.70 kW - 46.0x21.0 cm  
 Multizone right - Booster 3.70 kW - 46.0x21.0 cm

<b>Automatic setting according to pan dimension</b>	Yes	<b>Automatic switch off when overflow</b>	Yes
<b>pan detection</b>	Yes, min 9 cm	<b>Residual heat indicator</b>	Yes
<b>Permanent Automatic Pot Detection with indication of the relative control</b>	Yes	<b>Protection against accidental start up</b>	Yes

## Accessories Included

<b>Other accessories</b>	Filtering kit and charcoal filter included
--------------------------	--

## Electrical Connection

<b>Electrical connection rating (W)</b>	7620 W	<b>Type of electric cable supplied</b>	Yes, Single and Double phase
<b>Current</b>	33 A	<b>Frequency (Hz)</b>	50/60 Hz
<b>Voltage (V)</b>	220-240 V	<b>Power supply cable length</b>	120 cm
<b>Voltage 2 (V)</b>	380-415 V	<b>Terminal box</b>	6 poles

## Controls (hood)

<b>Hood control setting</b>	Touch Capacitive	<b>Display</b>	Yes
<b>Led color</b>	Bianco		

## Programs / Functions (hood)

Delay function	Yes	Intensive speed	2
No. of speeds	8	Auto-Vent	yes

## Technical Features (Hood)

Free outlet maximum capacity	650 m <sup>3</sup> /h	Anti-grease filters	Inox
Motor power	220 W	Charcoal filters included	YES, regenerable
No. of filters	1	Filter replacement indicator	Yes

## Performance / Energy Label (hood)

Fluid Dynamic Efficiency (FDE)	32,10	Airbourne acoustical A-weighted sound Power Emission at minimum speed (SPEmin)	49 dBA
Fluid Dynamic Efficiency class (FDEC)	A	Airborne acoustical A-weighted sound Power Emission at maximum speed (SPEmax)	68 dBA
Lighting Efficiency (LE)	0,0 lux/W	Airbourne acoustical A-weighted sound power emission at boost speed (SPEboost)	73 dBA
Lighting Efficiency Class (LEC)	NA	Time increase factor (F)	0,8
Grease Filtering Efficiency (GFE)	85,1 %	Energy Efficiency Index	44,2
Grease Filtering Efficiency Class (GFEC)	B	Measured air flow rate at best efficiency point (Qbep)	359 m <sup>3</sup> /h
Air flow at minumum speed (Qmin)	230 m <sup>3</sup> /h	Measured air pressure at best efficiency point (Pbep)	549 Pa
Air flow at maximum speed (Qmax)	500 m <sup>3</sup> /h	Measured electric power input at best efficiency point (Wbep)	139 W
Air flow at boost speed (Qboost)	630 m <sup>3</sup> /h	Sound power level at highest setting (Lwa)	68 dBA

## Electrical Connections (hood)

Frequenza cappa	50-60 Hz
-----------------	----------

---

## Speed 1

Extraction rate IEC 61591	230 m <sup>3</sup> /h
Noise level IEC 60704-2-13	49 dBA
Pressure	280 Pa
Power	40 W

---

## Speed 2

Extraction rate IEC 61591	270 m <sup>3</sup> /h
Noise level IEC 60704-2-13	51 dBA
Pressure	370 Pa
Power	50 W

---

## Speed 3

Extraction rate IEC 61591	340 m <sup>3</sup> /h
Noise level IEC 60704-2-13	55 dBA
Pressure	450 Pa
Power	90 W

---

## Speed 4

Extraction rate IEC 61591	370 m <sup>3</sup> /h
Noise level IEC 60704-2-13	60 dBA
Pressure	450 Pa
Power	90 W

---

## Speed 5

Extraction rate IEC 61591	400 m <sup>3</sup> /h
Noise level IEC 60704-2-13	62 dBA
Pressure	500 Pa
Power	100 W

---

## Speed 6

Extraction rate IEC 61591	435 m <sup>3</sup> /h
Noise level IEC 60704-2-13	63 dBA
Pressure	550 Pa
Power	120 W

---

## Speed 7

Extraction rate IEC 61591	460 m <sup>3</sup> /h
Noise level IEC 60704-2-13	65 dBA
Pressure	600 Pa
Power	150 W

---

## Speed 8

Extraction rate IEC 61591	500 m <sup>3</sup> /h
Noise level IEC 60704-2-13	68 dBA
Pressure	620 Pa
Power	170 W

---

## Intensive speed

Extraction rate (IEC 61591)	540 m <sup>3</sup> /h
Noise level IEC 60704-2-13	70 dBA
Pressure	625 Pa
Power	180 W

---

## Intensive Speed 2

Extraction rate IEC 61591	630 m <sup>3</sup> /h
Noise level IEC 60704-2-13	73 dBA
Pressure	630 Pa
Power	220 W



## Compatible Accessories



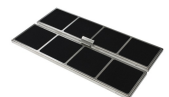
### CON60H

Flat duct connector for tubes 220\*60 mm. It help to connect more tubes of the kit KITEHOBD4



### CON90H

Connector for rectangular tubes high 90 mm. Size external 227\*94\*63 mm, internal 223\*90\*63 mm



### FLTHOBD2

n.2 high-performance carbon filters regenerable up to 8 times, washing it in the dishwasher and drying it at max 70° in the oven for max 120 minutes



### FLTSTDHOBD2



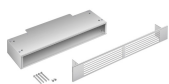
### GRI60H

Rectangular Louvred grille, external size 246\*80 mm and internal 226\*60\*50 mm



### GRILLPLATE

Universal griddle for induction, gas, ceramic and electric hobs. Non-stick surface ideal for cooking meat, cheese and vegetables. Dimensions: 410 x 240 mm.



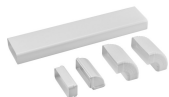
### GRIX6H

Stainless steel ventilation grille, size 426\*60 mm.



### KITDT50X10

tape for installation kit of HOBD\*2. 10 m lenght. 50 mm width.



### KITEHOBD10

Ducted kit for HOBD\*2 with tubes and curve high 10 mm.



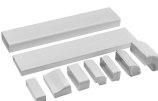
### KITEHOBD4

Filtering kit (lateral outlet) optional for Hobd: tube 1,5 mt and curve



### KITREBFLOW

Rectangular grid used in ventilation system. It regulates the air flow from the kitchen. Suitable for HOBD\*2 models.



### KITRHOB6

Mounting kit for recirculating installation: pipes and curves to be mounted in a plinth of minimum 6cm height. Available for HOBD\*2 series.

### KITSEBL

Squared grid used in ventilation system with backdraft Damper for regulating the air flow from the kitchen. Compatible for HOBD\*2 models.



### RED60H

Reducer from 90 to 60 mm suitable for rectangular tube of 220 mm. Size: 220x90x92 mm

### TPK











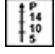








Stainless steel grill plate to cook  
Teppanyaki dishes

### TPKPLATE



Universal plate for induction, gas,  
ceramic and electric hobs. Non-stick  
surface ideal for cooking fish, eggs  
and vegetables. Dimensions: 410 X  
240 mm.

## Symbols glossary

 <p>Power booster: option allows the zone to work at full power when very intense cooking is necessary.</p>	 <p>Child lock: some models are fitted with a device to lock the programme/cycle so it cannot be accidentally changed.</p>
 <p>The slider control panel allows you to adjust the power simply by passing your finger across the touch device.</p>	 <p>Keep warm function: Keep warm function keeps the cooked food heated. In this mode the heating zone operates at a minimum capacity for 120 minutes and then turns off automatically.</p>
 <p>Melting function, suitable for slowly melting delicate foods such as chocolate or butter.</p>	 <p>Multizone: allows several pans to be used at once, large or small, offering freedom of placement and greater flexibility</p>
 <p>Overfill protection: The special overfill protection shuts down the stove in the presence of overflow of liquids.</p>	 <p>PAUSE_72dpi</p>
 <p>Quick selection, with one touch cooking begins at the highest level, then automatically reduces after time. Ideal for dishes that require quick boiling and then continued cooking without constant control (eg beef broth).</p>	 <p>Quick Start function: the chosen temperature is reached faster. The heating element works at maximum power until the right temperature is reached.</p>
 <p>Indication of residual heat: After the glass ceramic hob is switched off the residual heat indicator shows which of the heating zones still remains hot. When the temperature drops below 60 ° C, the indicator goes out.</p>	 <p>Simmering function: ideal for long-cooking recipes, preventing food from boiling over or sticking to the pan.</p>
 <p>Time elapsed: shows how long the cooking zone has been in use.</p>	 <p>Timer: All ceramic hobs have a timer which automatically ends cooking after a preset time.</p>
 <p>...</p>	 <p>...</p>
 <p>Premium individual Slider control for each zone</p>	

## Benefit (TT)

---

### Induction hobs

Fast cooking and precise temperature control

### Glass

Brightness and elegance in the kitchen: the acid-etched glass gives the surface a refined, modern look that enhances the space.

### Ceramic

Stability and design even up to 700°C: the cooktop material resists high temperatures without deforming, maintaining aesthetics and functionality even with intensive use.

### Stainless steel

Strong and easy to maintain every day: doesn't break if dropped, resists rust, easy to clean with detergents, and doesn't absorb liquids or odors.

Precise and versatile cooking with Multi Slider controls and white LEDs, combining functionality with minimal design

### Control knob position frontal

Instant and intuitive control thanks to front controls, easily accessible for practical use.

### Keep Warm function

Dishes always served at the right temperature, even after cooking, thanks to the Keep Warm function

Nine power levels and Boost function for optimal cooking performance

### Melting/Low temperature cooking function

Delicate ingredients like butter or chocolate can be melted at 44°C in a controlled way

### MultiZone

Large surface created by joining two contiguous zones, perfect for large dishes

In addition to their sleek aesthetics and contemporary design, Smeg induction hobs are equipped with innovative technologies. The Multizone function guarantees maximum flexibility in the use of the hob and endless cooking possibilities, expanding the cooking area to suit the shape and size of different pans

### Anti-grease filters

Easy cleaning thanks to durable stainless steel grease filters

### Permanent Automatic Pot Detection with indication of the relative control

Automatic activation of the correct cooking zone with Autopot Detection, recognizing the pot without user intervention

---

**Backlit controls with white LEDs**

Backlit controls with white LEDs for refined aesthetics and discreet visibility

**Automatic connection between integrated hood and hob**

Automatic hood adjustment based on cooktop power for always-adequate extraction

Greater comfort even after cooking: the Delay function automatically turns off the hood after the set time, removing odors and humidity