

SHW410X1

37CM DIAMETER WALLMOUNT RANGEHOOD



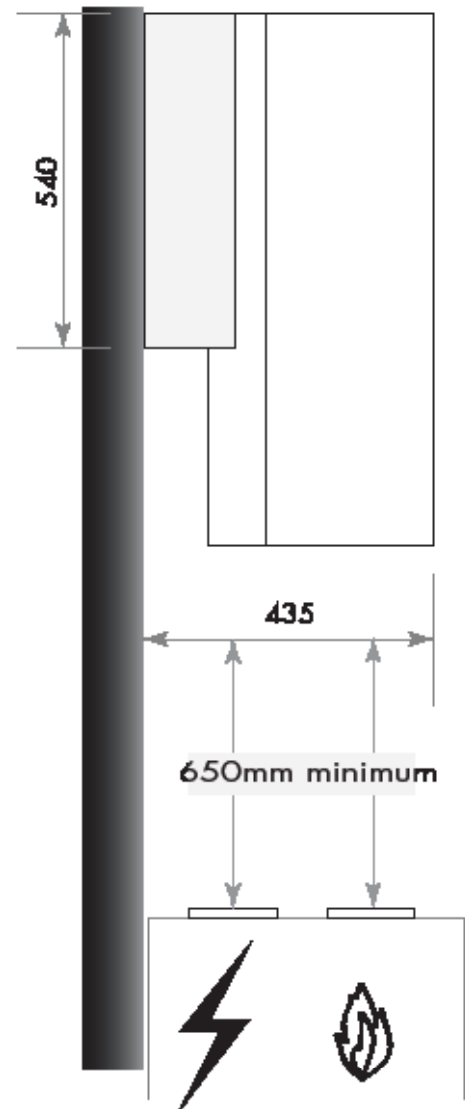
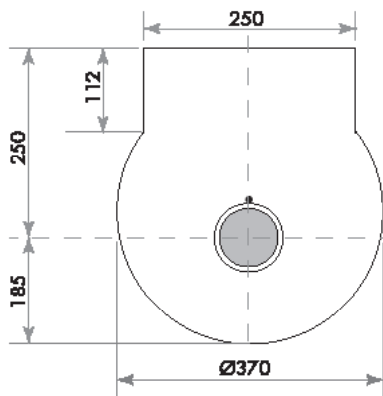
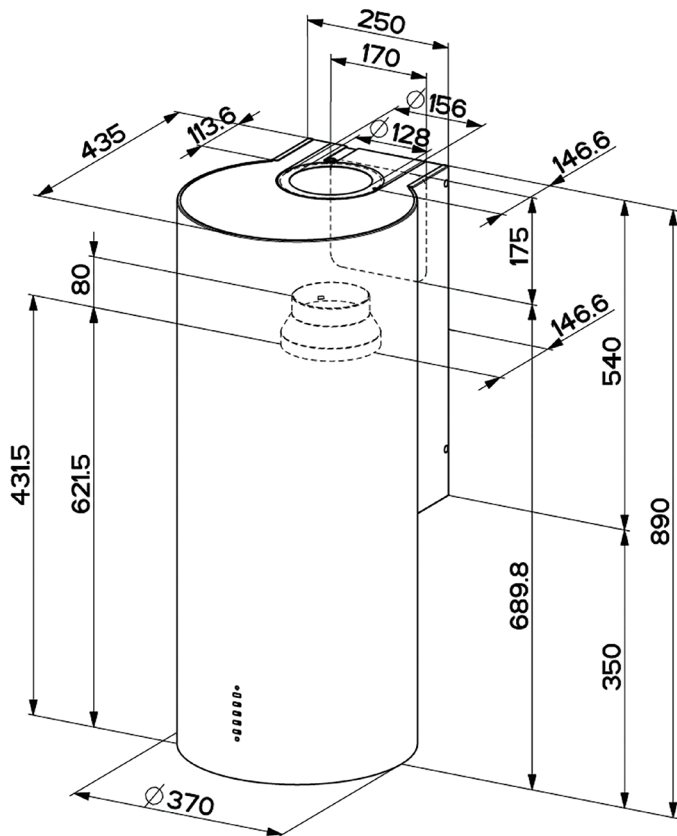
EAN 9345025001917

Finish	stainless steel
Dimensions	370mm diameter x 890mm H
Installation	wallmount
Motor	1 x 250W
Air extraction	<ul style="list-style-type: none"> • duct direct to atmosphere — 150mm diameter ducting required • recirculate to kitchen — 125mm ducting required
Capacity	620m ³ /hr (IEC 61591: p=0) 590m ³ /hr (IEC 61591: p=1)
Noise rating	47–65 dBA
Illumination	2 X 1W LED
Speeds	3 + intensive*, progressive button
Maximum current	0.17 amps
Power supply	220–240V, 50Hz
Supplied	1 x mesh grease filter
optional	charcoal filter, part # KITFC161
Weight	21.1kg gross, 15kg net
Package dimensions	580x1264x465mm

p = 0 → airflow direct out of motor housing
p = 1 → airflow after 1m & 90° bend + 1m

***INTENSIVE:** the Intensive Speed function activates maximum air extraction for 10 minutes to meet the needs heavy-duty cooking, such as stir-fry.

SHW410X1
37CM DIAMETER WALLMOUNT RANGEHOOD



PLEASE NOTE: drawings are not to scale. They are to assist only.

WARNING: technical specifications and product sizes can be varied by the manufacturer without notice. Cutouts for appliances should only be by physical product measurements. The above information is indicative only.